

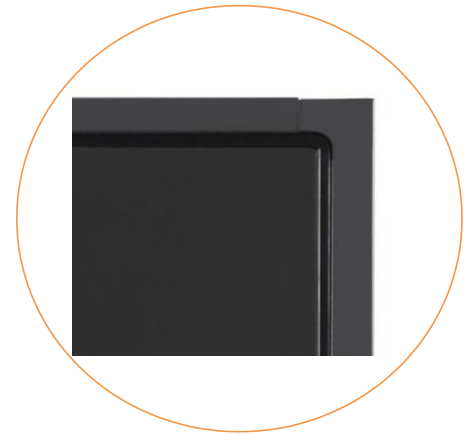
2139 16:9 5W Resistive

Open frame Touchscreen



Feature

- + Ultra narrow edge compact open frame design
- + Front frame against dust and liquids
- + Resolution 1920X1080FHD@60Hz
- + Commercial grade LCD, LED backlight
- + Widescreen full viewing Angle
- + Supports vertical and horizontal
- + 5- wire resistive touchscreen, accurate and sensitive
- + Projective capacitive touchscreen is optional
- + Removable OSD Remote for easy use
- + Video interface: HDMI+VGA
- + Multiple assembly holes on the side and back
- + Support OS: Windows/Linux/Android
- + 3-Year Warranty



Optional

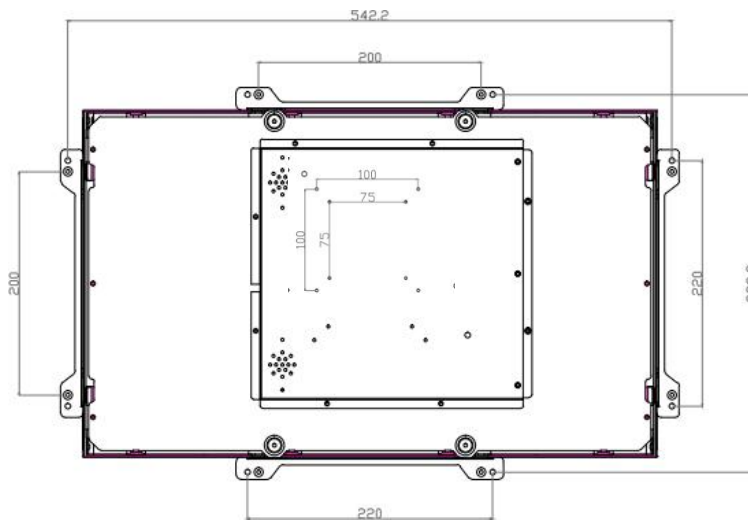
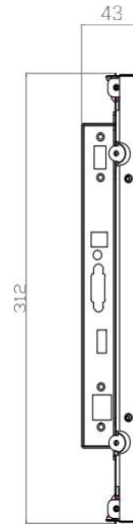
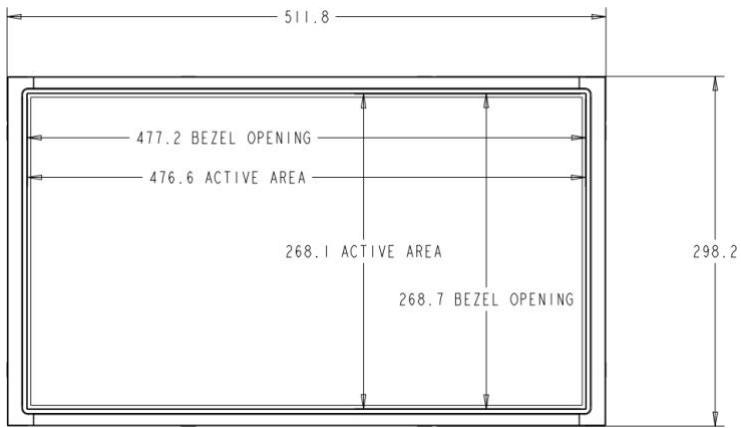
- No Touch
- Private Filter
- Touch Interface:RS232
- Video interface: Display Port



TDS2139 5W Resistive Open frame Touchscreen Specification

Model	2139
Diagonal	21.5"
Color	Black /Silver
Aspect Ratio	16:9
Active Area	476.64X 268.11(mm)
Dimensions	511.8X298.2X43(mm)
Resolution	1920X1080FHD@60Hz
Viewing Angle	Horizontal: 89° /89°; Vertical: 89° /89°
Number of Colors	16.7M
Brightness(typical)	LCD Panel : 300nits; PCAP : 275 nits
Response Time	14ms
Contrast Ratio	1000:1
Touch Technology	5W Resistive Touchscreen - Single Touch(standard) PCAP(Projective capacitve) -10 Touch (optional)
Transmittance	≥85%
Surface hardness	3H (Mohs)
Control card interface	USB 2.0
Video Interface	HDMI+VGA
Input Voltage	AC: 100-240 VAC,50/60 Hz
Sealability	Touchscreen sealed to bezel
Weight (Unpackage)	5.2KG
Shipping Dimensions	620X423X170(mm)
Operating Temperature	0°C to 40°C
Storage Temperature	-20°C to 60°C
Humidity	Operating: 20%-70%; Storage: 10%-80%
Mounting Options	Back VESA two groups of holes:100mm&200mm Four sides has a set of fixing holes:200mm
MTBF	30,000 hours demonstrated
Power Supply	DC:12V3A
Warranty	3-years
Agency Approvals	FCC; CE; ROHS
Support OS	Windows /Linux\Android
What's in the Box	1*USB cable,1*HDMI cable,1*DC cable,1*RJ OSD Remote(Standard) L" (Side Mount) Brackets and w/Screws(Options)

TDS2139-5WResistive



Dimensions are in millimeters

